



POEM BY: CAITLEN E. FRANK  
ART BY: SANA VALDEZ

LEVIATHAN



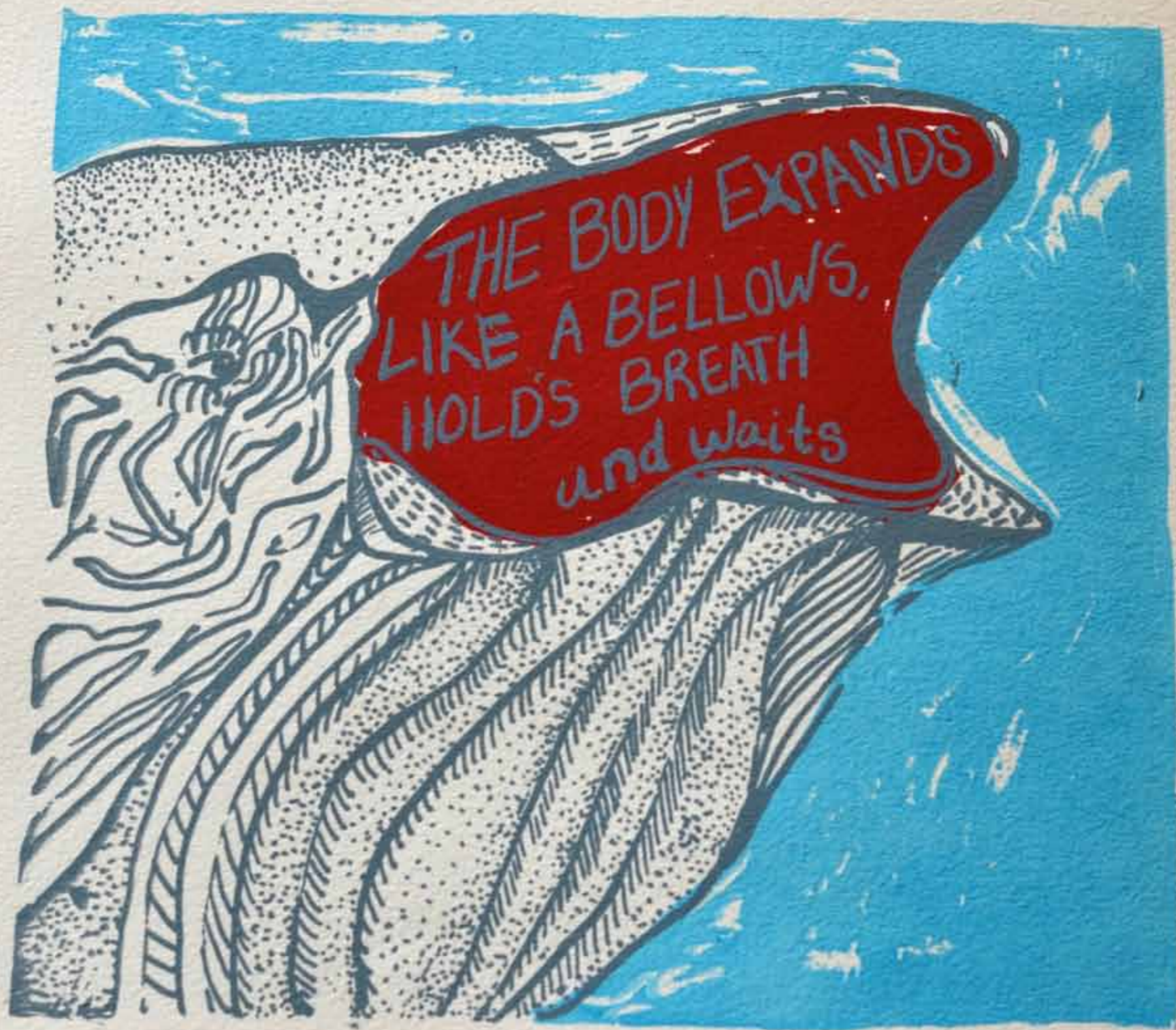


POEM BY, CAITLEN E. FRANK  
ART BY, ANNA VALDEZ



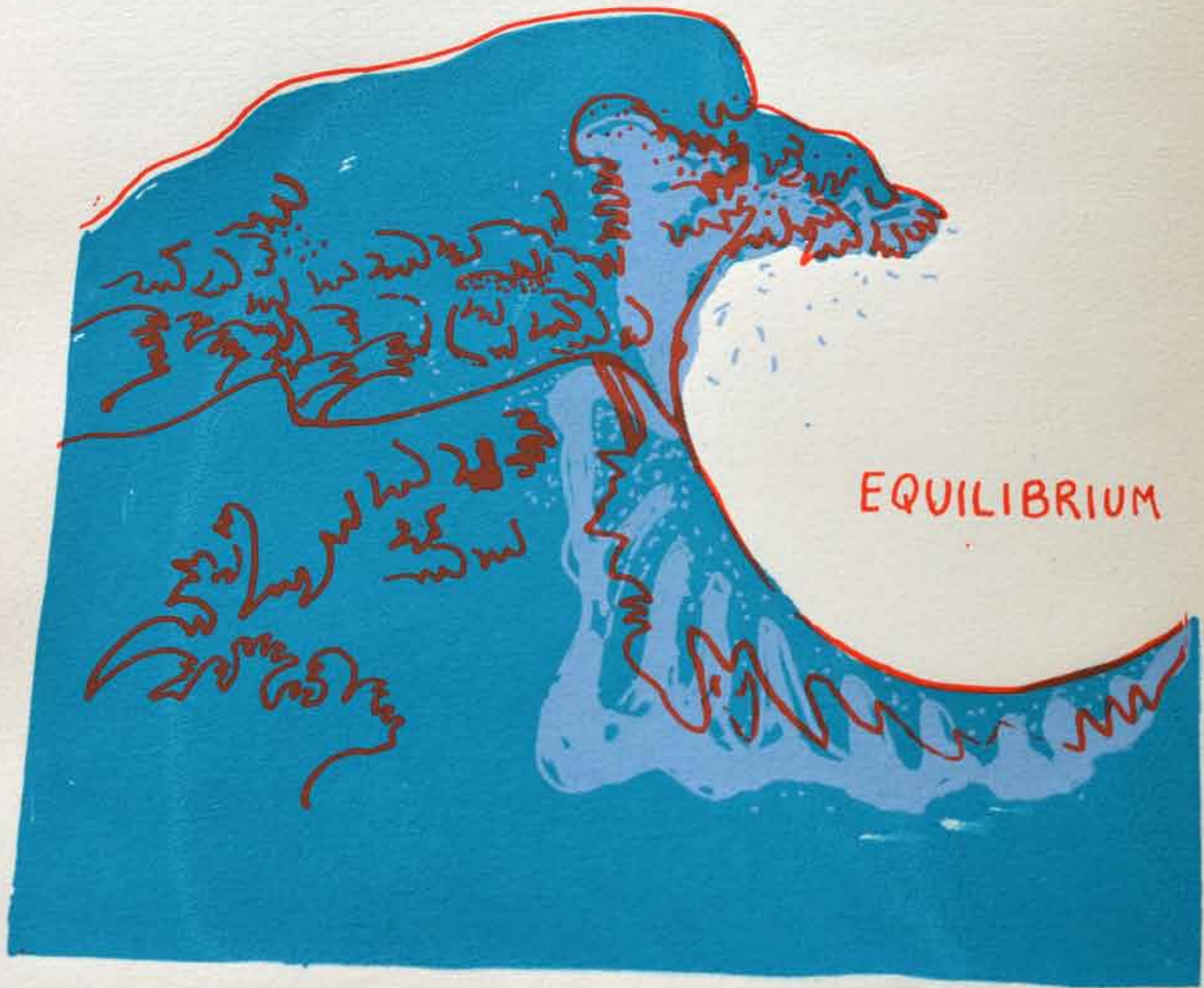
THE FRAME HANGS FLESH,  
COVERED IN SLICK GRAY SKIN





THE BODY EXPANDS  
LIKE A BELLOWS,  
HOLDS BREATH  
and waits

TO BREATHE ON FIRE.











THE OLD SENSE OF ASTRAL  
DIRECTION AND PLACEMENT,

WHAT DID THE STARS WANT?





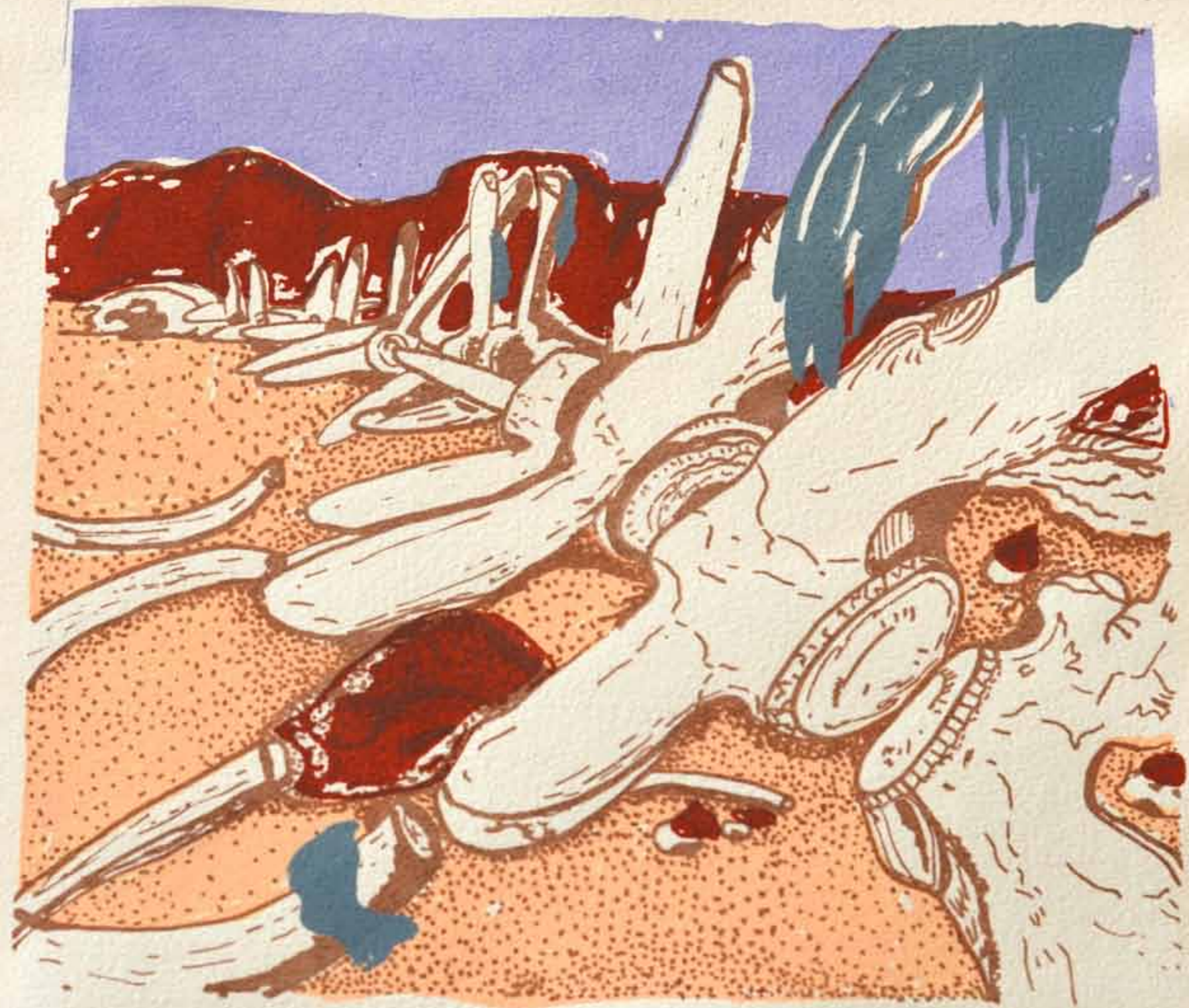




THE OLD NAME BIBLICAL,  
THE BEAST FELT THE EARTH  
IN ITS BONES, THE DRIFT,  
THE BRIGHT GRAINS OF SAND.



NOTHING BUT NEEDING A GOD,  
NOTHING





BUT THE GLINT OF THE MOON  
IN ONE WHITE EYE.







THIS BOOK WAS DESIGNED, DRAWN, AND  
PRINTED BY ANNA VALDEZ. THE POEM,

"LEVIATHAN" WAS WRITTEN BY  
CAITLEN E. FRANK. LEVIATHAN WAS  
CONCEPTUALIZED THROUGH THE COLLABORATION  
BETWEEN BOSTON UNIVERSITY'S COLLEGE OF  
FINE ARTS MFA PAINTING PROGRAM, AND  
THE CREATIVE WRITING MFA PROGRAM.

THIS EDITION WAS SCREEN-PRINTED USING  
SPEEDBALL ACRYLIC INK ON CREAM RIVES  
BFK, 175 GSM PAPER, AND IS LIMITED TO 15  
COPIES. THIS BOOK WAS PRINTED IN  
BOSTON, MASSACHUSETTS AT BOSTON  
UNIVERSITY'S COLLEGE OF FINE ARTS  
DEPARTMENT IN APRIL 2012.

1/13

Anna Valdez